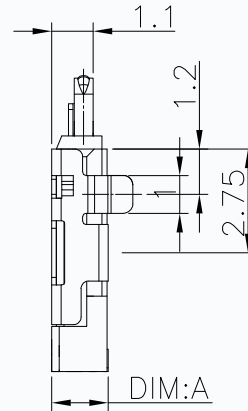
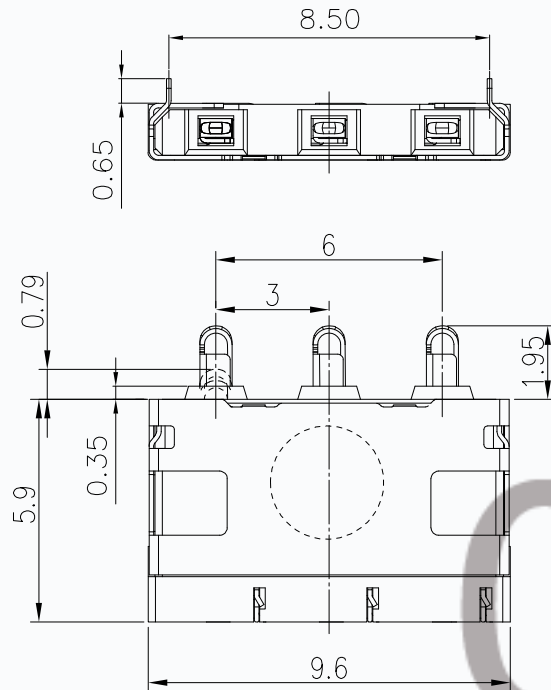


RoHS

REVISIONS				
LTR	DESCRIPTION	DATE	REVISED	APPROVED



NOTES

1.Electrical:

Contact resistance:50m ohms max.
Dielectric withstanding voltage:250V RMS,
Insulation resistance:1000M ohms min

2.Mechanical:

MATE AND UNMATE FORCE:
MATE FORCE:2kg MAX
UNMATE FORCE:0.5kg MIN.
Durability: 3000cycles MIN.

3.Environment:Operating Temperature:-55°to+105°

4.FINISH:

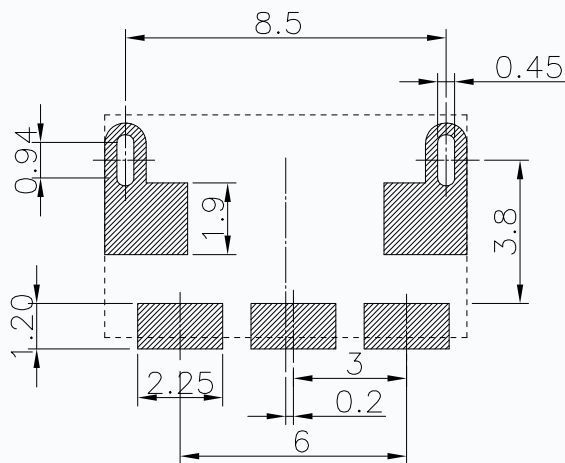
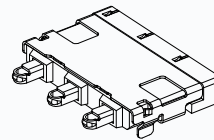
TERMINAL: GOLD Plated ALL Over NICKEL

5.COLOR:

HOUSING: BLACK

CMTDDZ

	1.9
	1.5
P/N	DIM: A (mm)



RECOMMENDED PCB LAYOUT
TOL: (±0.05)

UNLESS OTHERWISE SPECIFIED TOLERANCES		CMTDDZ 东莞市田都科技有限公司 Dongguan TianDu Technology Co. Ltd.	
1.GENERAL TOLERANCE X ±0.30 X.X ±0.25 X.XX ±0.15	2.ANGLE TOLERANCE XX° ±5' X ±2'	DESIGNER BY:	TYPE: The battery holder
PROJECTION:		CHECK BY:	MODEL NO: T26-30CF-3N-1.5H-01
SCALE:1:1	UNIT: mm	APPROVED BY:	DATE : 2023/03/20
VERSION: A1	PAGE: 1/1		