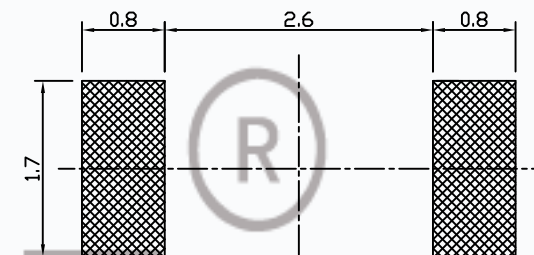
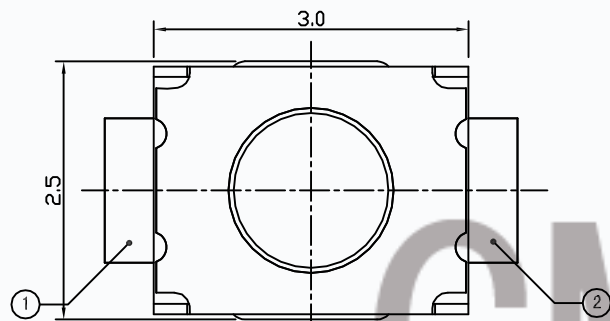
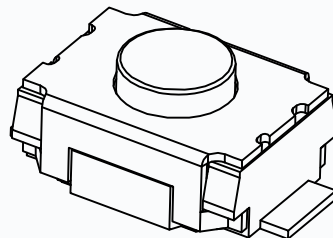
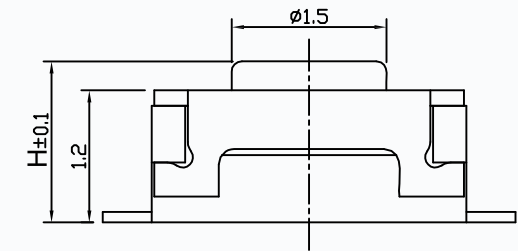
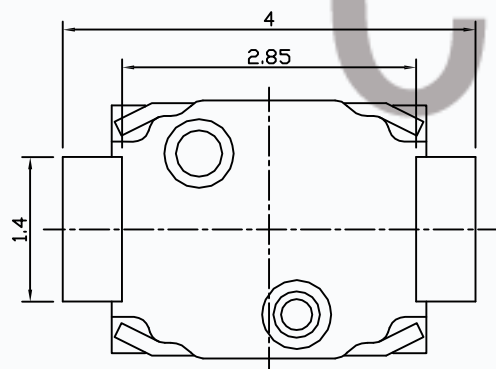


Version	ECM	Amendments	Modifier	Date Modified



PCB Layout



Remarks:

1. Rated current, Voltage: DC 12V 50mA
2. Contact resistance: $\leq 100\text{m}\Omega$
3. Insulation resistance: $\geq 100\text{M}\Omega$
4. The intensity of operations: $160 \pm 50\text{gf}$
5. Life requirements: 100000次
6. Withstand voltage: AC250V 1分钟
7. All materials comply with RoHS2.0 standards

NO.	PART NAME	MATERIAL	QTY	FINISHING	General	Tolerance	DRAWN	ERIC	Product Name	Tact switch
6	Paster	PI	1	Yellow	$X \leq 1$	± 0.05	AFFIRM		Model Number	T6-2530S-H-02
5	Housing	LCP	1	White	$1 \leq X \leq 5$	± 0.10	AUDITING		DATE	2019-11-08
4	Terminal	Phosphor copper	4	Ag Plating	$5 \leq X \leq 10$	± 0.15	SHEET	1:1 UNIT mm		
3	Shrapnel	SUS	2	Ag Plating	$X > 10$	± 0.25				
2	Cover	SUS	1	/	ANCI F	$\pm 3^\circ$				
1	Button	LCP	1	Black						
							CMTDDZ 东莞市田都科技有限公司 Dongguan TianDu Technology Co. Ltd.			