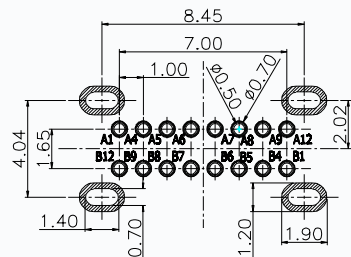
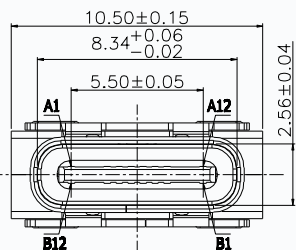
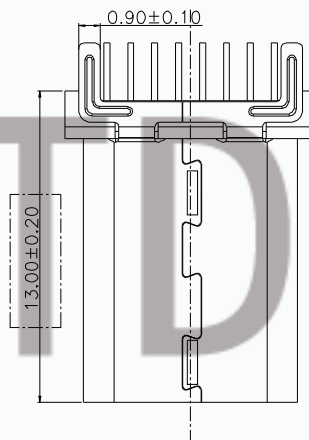
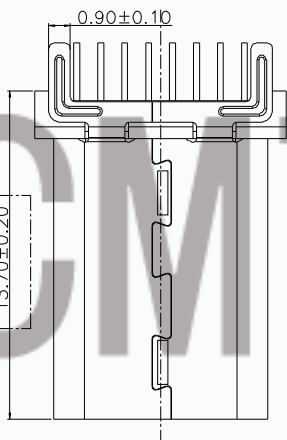
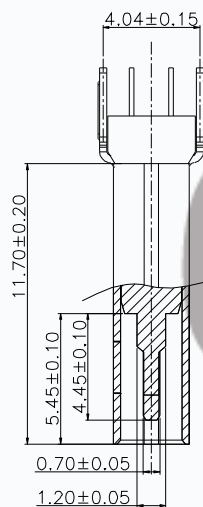
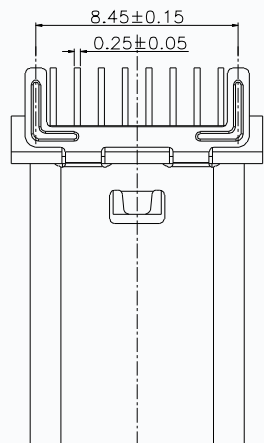
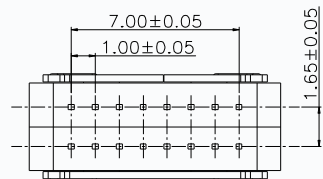




REV	DESCRIPTION	DATE	APPROVED
	新版发行	2020. 11. 30	ERIC



**特性:**

**一、电气性能: ELECTRICAL**

1. 额定电流: 5.0A
2. 接触阻抗: 40 MILLIOHMS MAX
3. 耐电压: 100V AC / 1 mA MAX
4. 绝缘阻抗: 150V DC/100 MEGA OHMS MIN

**二、机械性能:**

1. 插入力: 5~20N
2. 拨出力: 8~20N
3. 使用寿命: 10000次、拨出力 5N MIN

**三、材料: MATERIAL**

**四、电镀: FINISH**

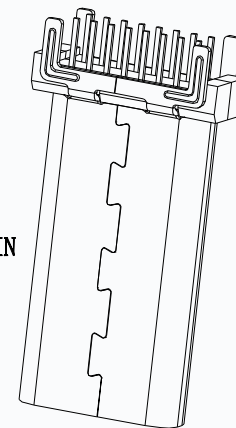
1. 端子: 接触点镀金1U"MIN  
PIN脚焊接区域镀锡80U"MIN
2. 外壳: 镀镍80U"MIN (盐雾48H)

**五、电镀品需做粘锡测试: 粘锡面积达到95%以上。**

**六、SMT回流焊 (峰值260° C±5° C) 不能起泡、熔胶、变色不良 (变形在公差范围以内)**

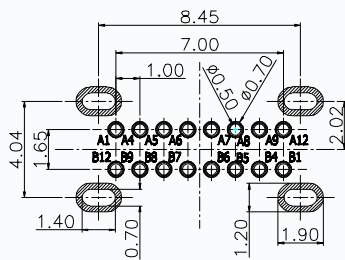
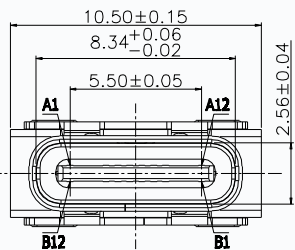
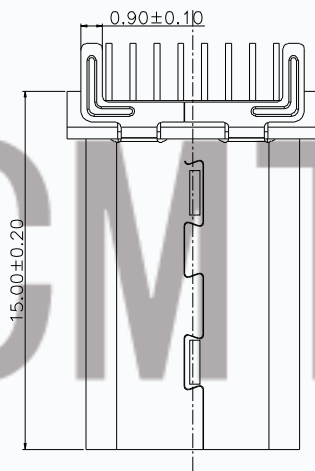
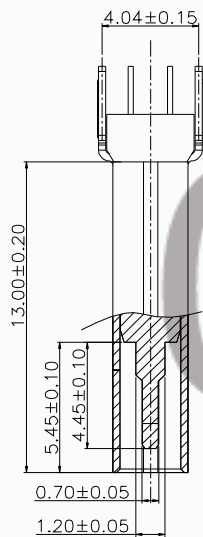
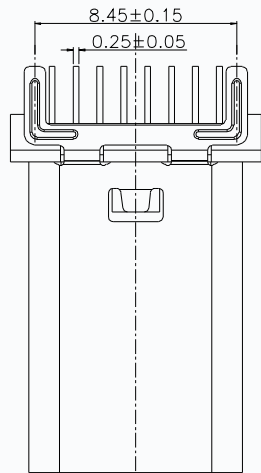
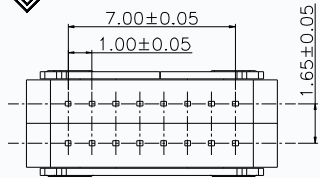
**七、工作温度: -55° C~+85° C**

**八、盐雾测试: 通过24H在浓度为5±1%盐水的盐雾测试无生锈现象**



A1	A2	A3	A4	A5	A6	A7	A8	A9	A10	A11	A12
GND			VBUS	CC1	D+	D-		VBUS			GND
GND			VBUS		D-	D+	CC2	VBUS			GND
B12	B11	B10	B9	B8	B7	B6	B5	B4	B3	B2	B1

CUSTOMER DRAWING			CMTDDZ 东莞市田都科技有限公司 Dongguan TianDu Technology Co. Ltd.		
UNITS	SCALE	SHEET	TITLE		
mm	1:1	1 OF 1	Type-C 16PIN 立插 13.0、13.7成品 无弹		
PROJECTION:	DRAW:	ERIC	MAT'L		
GENERAL TOLERANCE	CHECK:	DAVID	SEE TABLE		FINISH
0. ±0.10	APPD:	JEFF	SEE TABLE		SEE TABLE
0.0 ±0.05			DWG. NO.		PART NO.
0.00 ±0.02			T11-16LC03-13.0/13.7H		SIZE
0.0° ±4°					A4
0.0° ±3°					



A1	A2	A3	A4	A5	A6	A7	A8	A9	A10	A11	A12
GND			VBUS	CC1	D+	D-		VBUS			GND
GND			VBUS		D-	D+	CC2	VBUS			GND
B12	B11	B10	B9	B8	B7	B6	B5	B4	B3	B2	B1

REV	DESCRIPTION	DATE	APPROVED
	新板发行	2020.11.30	ERIC

特性:

一、电气性能: ELECTRICAL

1. 额定电流: 5.0A
2. 接触阻抗: 40 MILLIOHMS MAX
3. 耐电压: 100V AC / 1 mA MAX
4. 绝缘阻抗: 150V DC/100 MEGA OHMS MIN

二、机械性能:

1. 插入力: 5~20N
2. 拨出力: 8~20N
3. 使用寿命: 10000次、拨出力 5N MIN

三、材料: MATERIAL

四、电镀: FINISH

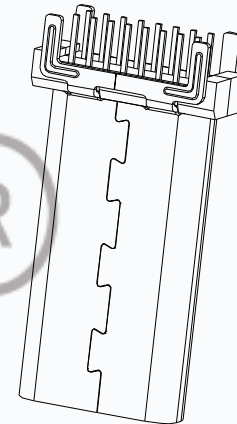
1. 端子: 接触点镀金1U"MIN  
PIN脚焊接区域镀锡80U"MIN
2. 外壳: 镀镍80U"MIN (盐雾48H)

五、电镀品需做粘锡测试: 粘锡面积达到95%以上。

六、SMT回流焊 (峰值260° C±5° C) 不能起泡、熔胶、变色不良 (变形在公差范围以内)

七、工作温度: -55° C~+85° C

八、盐雾测试: 通过24H在浓度为5±1%盐水的盐雾测试无生锈现象



CUSTOMER DRAWING			CMTDDZ 东莞市田都科技有限公司 Dongguan TianDu Technology Co. Ltd.		
UNITS	SCALE	SHEET	TITLE		
mm	1:1	1 OF 1	Type-C 16PIN 立插 15.0成品 无弹		
PROJECTION:	DRAW:		ERIC		
GENERAL TOLERANCE	CHECK:		DAVID		
0. ±0.10	APPD:		JEFF		
0.0 ±0.05	DWG. NO.		T11-16LC03-15H		SIZE
0.00 ±0.02	PART NO.				A4
0.° ±4°					
0.0° ±3°					



REV	DESCRIPTION	DATE	APPROVED
	新板发行	2020. 11. 30	ERIC

特性:

一、电气性能: ELECTRICAL

1. 额定电流: 5.0A
2. 接触阻抗: 40 MILLIOHMS MAX
3. 耐电压: 100V AC / 1 mA MAX
4. 绝缘阻抗: 150V DC/100 MEGA OHMS MIN

二、机械性能:

1. 插入力: 5~20N
2. 拨出力: 8~20N
3. 使用寿命: 10000次、拨出力 5N MIN

三、材料: MATERIAL

四、电镀: FINISH

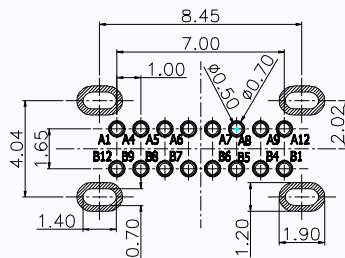
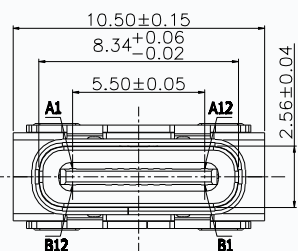
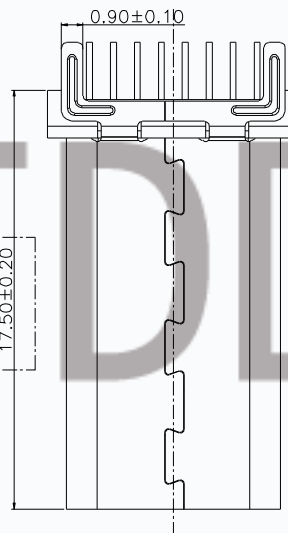
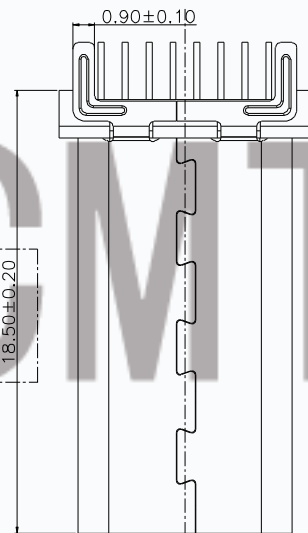
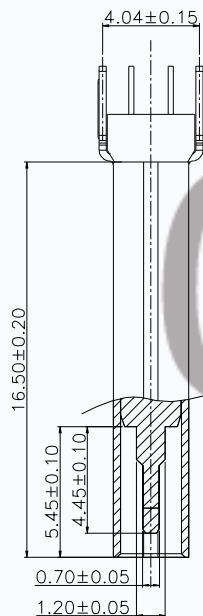
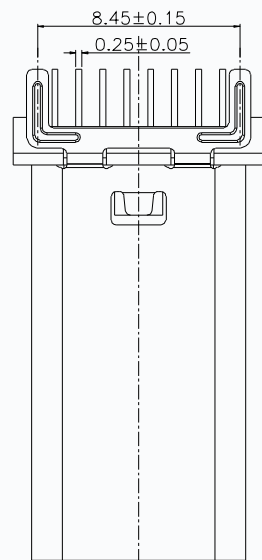
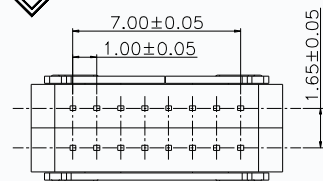
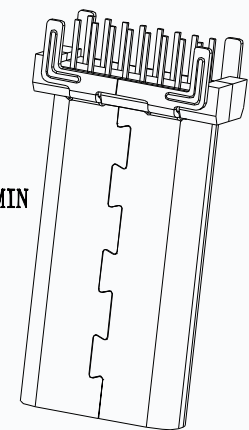
1. 端子: 接触点镀金1U"MIN  
PIN脚焊接区域镀锡80U"MIN
2. 外壳: 镀镍80U"MIN (盐雾48H)

五、电镀品需做粘锡测试: 粘锡面积达到95%以上。

六、SMT回流焊(峰值260° C±5° C)不能起泡、熔胶、变色不良(变形在公差范围以内)

七、工作温度: -55° C~+85° C

八、盐雾测试: 通过24H在浓度为5±1%盐水的盐雾测试无生锈现象



A1	A2	A3	A4	A5	A6	A7	A8	A9	A10	A11	A12
GND			VBUS	CC1	D+	D-		VBUS			GND
GND			VBUS		D-	D+	CC2	VBUS			GND
B12	B11	B10	B9	B8	B7	B6	B5	B4	B3	B2	B1

CUSTOMER DRAWING				CMTDDZ 东莞市田都科技有限公司 Dongguan TianDu Technology Co. Ltd.			
UNITS	SCALE	SHEET		TITLE			
mm	1:1	1 OF 1		Type-C 16PIN 立插 17.5、18.5成品 无弹			
PROJECTION:	DRAW:		ERIC				
GENERAL TOLERANCE	CHECK:		DAVID				
0. ±0.10	APPD:		JEFF				
0.0 ±0.05	DWG. NO.		SEE TABLE		FINISH		
0.00 ±0.02	T11-16LC03-17.5/18.5H		PART NO.		SEE TABLE		
0.° ±4°	SIZE		A4				
0.0° ±3°							