

RoHS

REV.	ECN NO.	APPD.
A	NEW DRAW	ERIC
B		

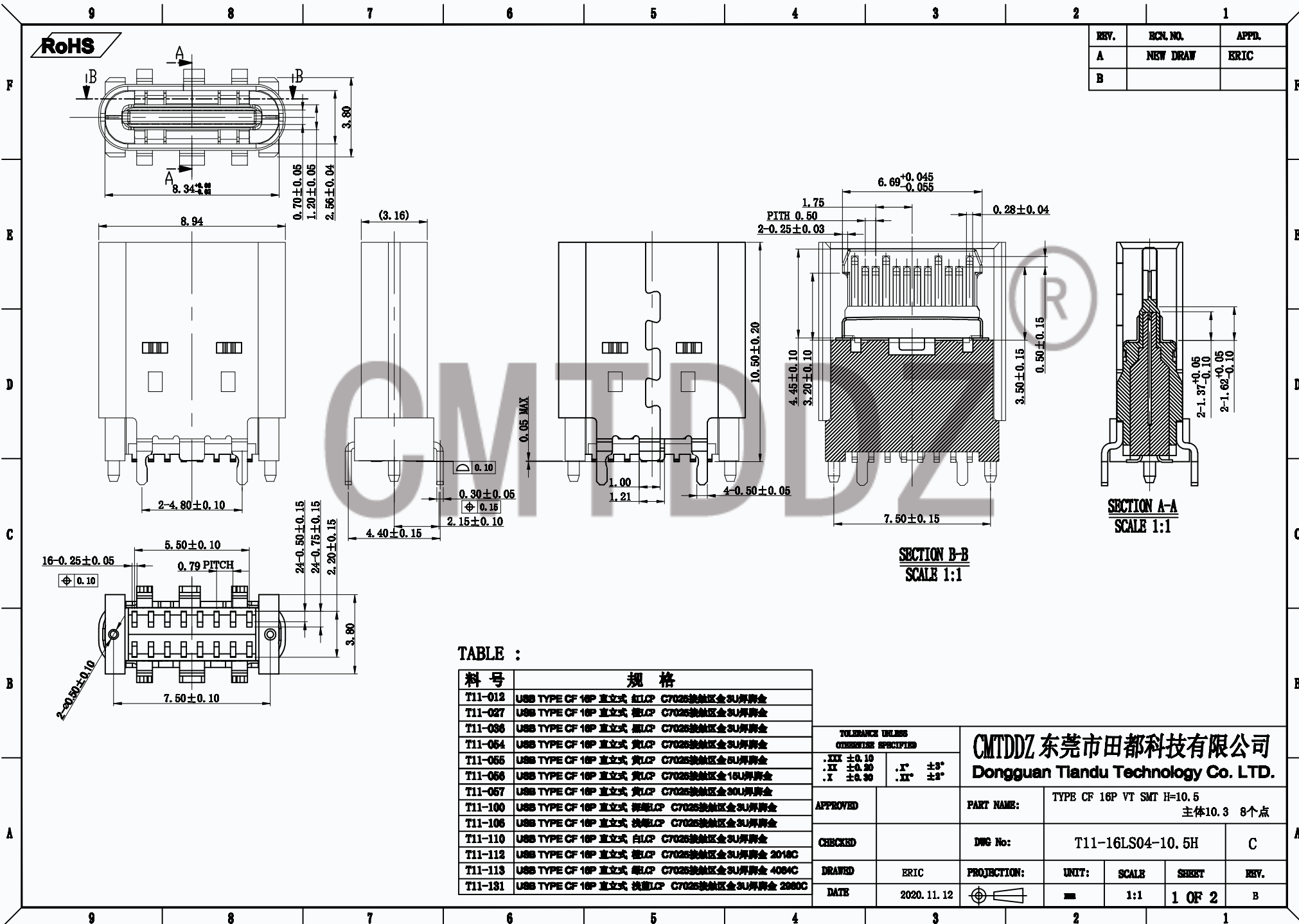


TABLE :

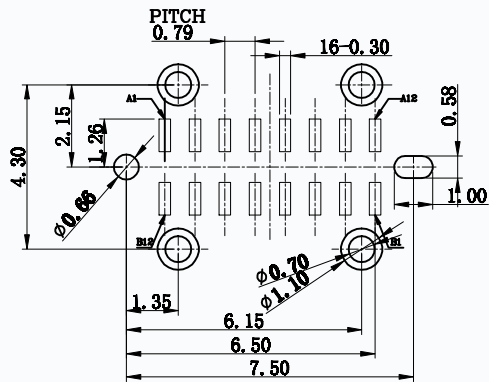
料号	规格
T11-012	USB TYPE CF 16P 直立式 红LCP C7026接触区金3U焊脚金
T11-027	USB TYPE CF 16P 直立式 绿LCP C7026接触区金3U焊脚金
T11-036	USB TYPE CF 16P 直立式 黑LCP C7026接触区金3U焊脚金
T11-054	USB TYPE CF 16P 直立式 黄LCP C7026接触区金3U焊脚金
T11-055	USB TYPE CF 16P 直立式 黄LCP C7026接触区金5U焊脚金
T11-056	USB TYPE CF 16P 直立式 黄LCP C7026接触区金16U焊脚金
T11-057	USB TYPE CF 16P 直立式 黄LCP C7026接触区金30U焊脚金
T11-100	USB TYPE CF 16P 直立式 深绿LCP C7026接触区金3U焊脚金
T11-106	USB TYPE CF 16P 直立式 浅绿LCP C7026接触区金3U焊脚金
T11-110	USB TYPE CF 16P 直立式 白LCP C7026接触区金3U焊脚金
T11-112	USB TYPE CF 16P 直立式 绿LCP C7026接触区金3U焊脚金 2018C
T11-113	USB TYPE CF 16P 直立式 绿LCP C7026接触区金3U焊脚金 4064C
T11-131	USB TYPE CF 16P 直立式 浅绿LCP C7026接触区金3U焊脚金 2980C

TOLERANCE UNLESS OTHERWISE SPECIFIED	
.XXX ±0.10	.X' ±3°
.XX ±0.20	.X'' ±3°
.X ±0.30	

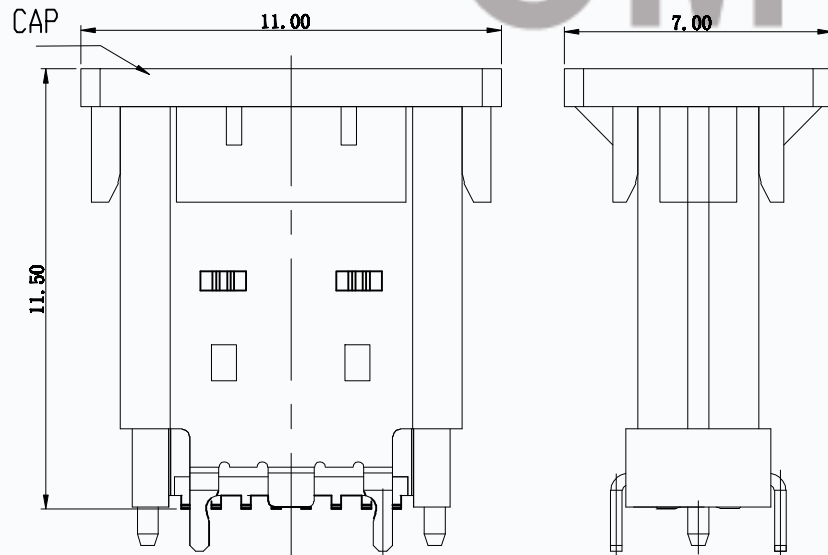
CMTDDZ 东莞市田都科技有限公司  
Dongguan Tiandu Technology Co. LTD.

APPROVED	PART NAME:	TYPE CF 16P VI SMT H=10.5 主体10.3 8个点			
CHECKED	DWG No:	T11-16LS04-10.5H	C		
DRAWN	ERIC	PROJECTION:	UNIT:	SCALE:	SHEET:
DATE	2020.11.12	第一角	mm	1:1	1 OF 2

RoHS



RECOMMENDED P.C.B. LAYOUT (T:1.00mm)  
 TOLERANCE UNSPECIFIED ±0.05mm  
 SCALE: 1:1



盖上CAP后

NOTE:

1. MATERIAL SPECIFICATION:
  1. HOUSING: HIGH TEMPERATURE RESISTANT PLASTIC, UL94 V-0.
  2. CONTACTS: COPPER ALLOY
  3. MID PLATE: STAINLESS STEEL
  4. FRONT SHELL: STAINLESS STEEL
  5. EMI PLATE: STAINLESS STEEL
  6. TOP SHELL: STAINLESS STEEL
2. PLATING SPECIFICATION:
  - 2-1. CONTACTS:
    - Ni 50u" MIN. UNDER PLATED OVER ALL.
    - Au 3u" PLATED ON THE FUNCTIONAL AREA OF CONTACT.
    - Au G/F PLATED ON SOLDER AREA.
  - 2-2. FRONT SHELL & TOP SHELL:
    - Ni 30u" MIN. UNDER PLATED OVER ALL.
  - 2-3. SHIELD PLATE & EMI PLATE:
3. MECHANICAL PERFORMANCE:
  - 3-1. INSERTION FORCE: 0.5~2.0kgf.
  - 3-2. REMOVAL FORCE: 0.8kgf~2.0kgf.
  - 3-3. DURABILITY: 10000 CYCLES.
4. ELECTRICAL PERFORMANCE:
  - 4-1. CURRENT RATING: 5.0A  
VOLTAGE RATING: 5.0V
  - 4-2. ILCR:
    - VBUS & GND PINS AND OTHER PINS: 40mΩ/PIN MAX.
    - SHIELD: 50mΩ/MAX.
    - ILCR MAX. CHANGE OF ALL PINS: 10mΩ.
  - 4-3. INSULATION RESISTANCE: 100MΩ MIN
  - 4-4. DIELECTRIC WITHSTAND VOLTAGE, AC 100V FOR 1 MINUTE.
5. ENVIRONMENTAL PERFORMANCE:
  - OPERATING TEMPERATURE: -25° C~+85° C.
  - THE PEAK TEMPERATURE ON THE BOARD SHALL

USB TYPE-C PIN ASSIGNMENTS

PIN NUMBER	SIGNAL NAME	PIN NUMBER	SIGNAL NAME
A1	GND	B12	GND
A4	VBUS	B9	VBUS
A5	CC1	B8	SBU2
A6	Dp1	B7	Dn2
A7	Dn1	B6	Dp2
A8	SBU1	B5	CC2
A9	VBUS	B4	VBUS
A12	GND	B1	GND

TOLERANCE UNLESS OTHERWISE SPECIFIED	
.XXX ±0.10	.X' ±3°
.XX ±0.20	.XX' ±3°
.X ±0.30	

CMTDDZ 东莞市田都科技有限公司  
 Dongguan Tiandu Technology Co. LTD.

APPROVED		PART NAME:	TYPE CF 16P VT SMT H=10.5 主体10.3 8个点			
CHECKED		DWG No:	T11-16LS04-10.5H	C		
DRAWN	ERIC	PROJECTION:	UNIT:	SCALE:	SHEET:	REV.
DATE	2020.11.12		mm	1:1	2 OF 2	B