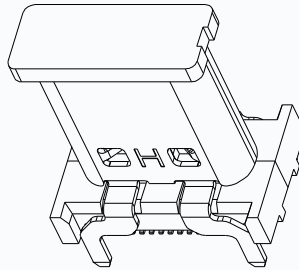
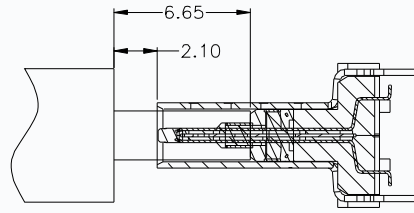


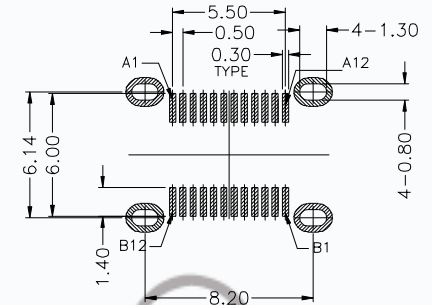
WITHOUT COVER



WITH COVER



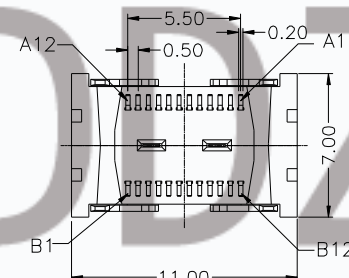
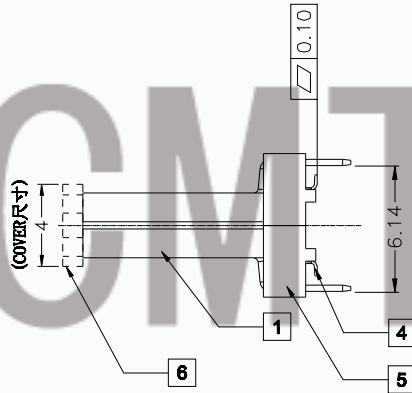
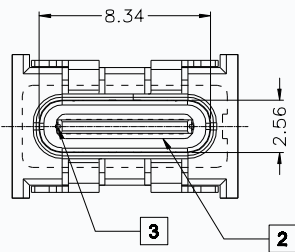
AFTER MATING



RECOMMEND P.C.B LAYOUT (COMPONENT SIDE)

TOLERANCE FOR PCB LAYOUT IS ± 0.05

KEEP OUT AREA

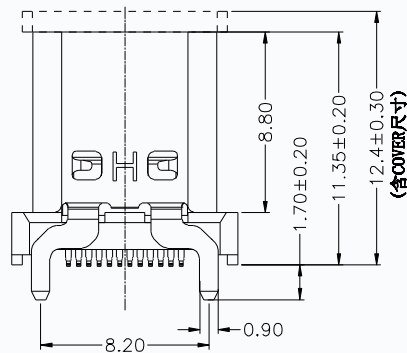


T11-24LS07-11H-XX-R

Mating Area plating

- 01: Au 1u"Min.
- 03: Au 3u"Min.
- 05: Au 5u"Min.
- 10: Au 10u"Min.
- 15: Au 15u"Min.
- 30: Au 30u"Min.

- 1.Contact Resistance:40mOHM Max.;
- 2.Dielectric Withstanding Voltage:100V AC For 1 Minute;
- 3.Insulation Resistance:100M OHM Min.;
- 4.Mating And unmating Force:
Mating Force: 5~20N
Unmating Force: 8~20N;
6~20N AFTER TEST;
- 5.Durability:10000 Cycles;



USB TYPE-C PIN ASSIGNMENTS

PIN NUMBER	SIGNAL NAME
A1	GND
A2	TX1+
A3	TX1-
A4	Vbus
A5	CC1
A6	D+
A7	D-
A8	SBU1
A9	Vbus
A10	RX2-
A11	RX2+
A12	GND

PIN NUMBER	SIGNAL NAME
B12	GND
B11	RX1+
B10	RX1-
B9	Vbus
B8	SBU2
B7	D-
B6	D+
B5	CC2
B4	Vbus
B3	TX2-
B2	TX2+
B1	GND

Item	Title	Material	Dispose	Q'TY
1	Shell	Stainless Steel	Ni:30u" Min.	1PCS
2	GND Plate	Stainless Steel		2PCS
3	Mid Plate	Stainless Steel		1PCS
4	Contact	Copper Alloy	Mating Area: See P/N Solder Tails: Matt Tin	24PCS
5	InsertMolding	High Temperature Plastic	UL 94V-0 Black	1PCS
6	COVER	High Temperature Plastic	UL 94V-0 Black	1PCS

X. ± 0.35	APPD: JEFF	TITLE: USB 3.1 TYPE C FEMALE VERTICAL H11.4mm SMT TYPE	PART NO: T11-24LS07-11H
.X ± 0.25	CHKD: /		
.XX ± 0.15	DR: ERIC		
.XXX ± 0.10			
X' $\pm 2'$			
.X' $\pm 1.5'$			
	UNITS: mm	SCALE: 3:1	DWG NO: T11-24LS07-11H
			CUSTOMER DRAWING
			SHEET:10F1
			REV: X1

CMTDDZ 东莞市田都科技有限公司
Dongguan Tiandu Technology Co., Ltd.

REV	ECN NO	DESCRIPTION	DESIGN	DATE
X1	TD2021-XXXX	New Drawing	ERIC	2021/02/25