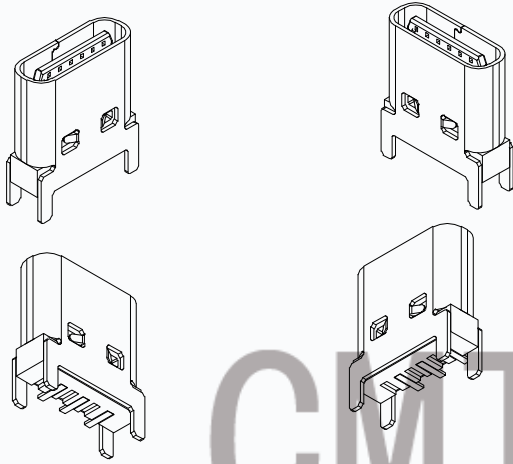


# CMTDDZ 东莞市田都科技有限公司 Dongguan TianDu Technology Co. Ltd.

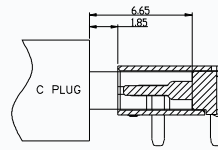
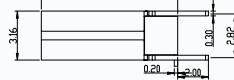
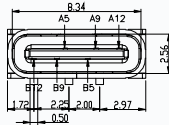
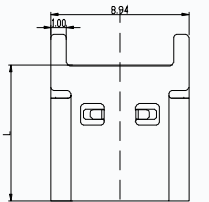
## TYPE-C 3PIN-H8.8-10.5立式贴板SMT



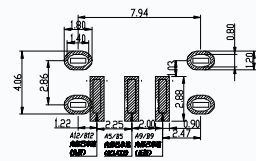
### PART SPECIFICATIONS:

1. MATERIAL SPECIFICATION:
  - 1.1 HOUSING: HIGH TEMPERATURE RESISTANT PLASTIC, UL94 V-0.
  - 1.2 CONTACTS: COPPER ALLOY
  - 1.3 SHELL: STAINLESS STEEL
2. PLATING SPECIFICATION:
  - 2.1 CONTACTS:
    - Ni 50u" MIN. UNDER PLATED OVER ALL.
    - Au PLATED ON THE FUNCTIONAL AREA OF CONTACT.
    - Au PLATED ON SOLDER AREA.
  - 2.2 FRONT SHELL:
    - Ni 50u" MIN. UNDER PLATED OVER ALL.
3. MECHANICAL PERFORMANCE,
  - 3.1 INSERTION FORCE: 0.5~2.0kgf.
  - 3.2 REMOVAL FORCE: 0.6kgf~2.0kgf.
  - 3.3 DURABILITY: 5000 CYCLES.
4. ELECTRICAL PERFORMANCE
  - 4.1 CURRENT RATING: 3.0A  
VOLTAGE RATING: 5.0V
  - 4.2 LLCR:
    - VBUS & GND PINS AND OTHER PINS: 40mΩ/PIN MAX.
    - LLCR MAX. CHANGE OF ALL PINS: 10mΩ.
  - 4.3 INSULATION RESISTANCE: 100MΩ MIN
  - 4.4 DIELECTRIC WITHSTAND VOLTAGE, AC 100V FOR 1 MINUTE.
5. ENVIRONMENTAL PERFORMANCE:
  - OPERATING TEMPERATURE: -25°C~+85°C.
6. IR REFLOW:
  - THE PEAK TEMPERATURE ON THE BOARD SHALL BE MAINTAINED FOR 10 SECONDS AT 260°C.

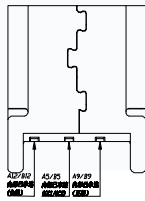
### 尺寸参数 / PRODUCT DIMENSION



AFTER MATING



RECOMMENDED P.C.B. LAYOUT  
TOLERANCE UNSPECIFIED ±0.05mm



PIN ASSIGNMENTS					
L	L	A5	CC1	B12	GND
L	L = 8.8	A9	VBUS	B9	VBUS
L	L = 9.3	A12	GND	B5	CC2
L	L = 10.0	PIN	SIGNAL NAME	PIN	SIGNAL NAME
L	L = 10.5				

TOLERANCE	NAME (INTENDED USE) CUSTOMER DRAWING	CMTDDZ 东莞市田都科技有限公司 Dongguan TianDu Technology Co. Ltd.
X.X ±0.30, X.' ±10'	PART NO.	TITLE:
.XX ±0.20, .X' ±8'	DESIGN: ERIC	TYPE-C 3PIN-H8.8-10.5立式贴板SMT
.XXX ±0.10, .XX' ±5'	CHED:	DRAWG NO.
UNITS: mm	APPD:	SCALE: 1:1
MATERIAL:		SHEET: 1/2
FINISH:		REV: V0