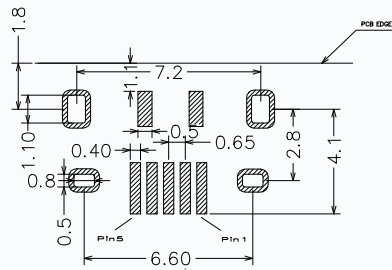
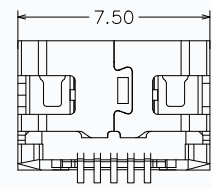
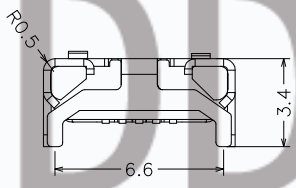
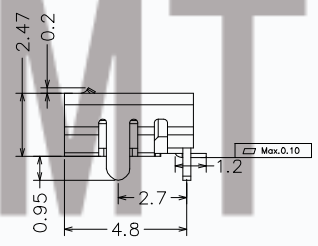
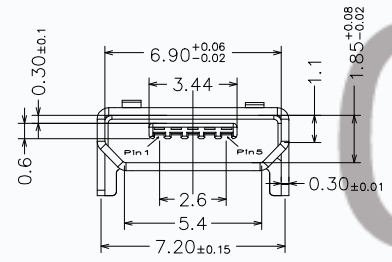
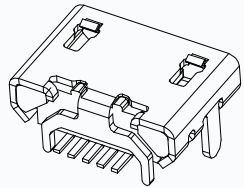
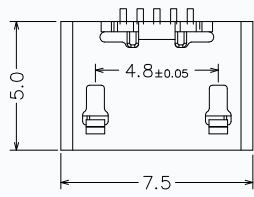


REV.	MODIFICATION	ECN No.	NAME	DATE
A				



RECOMMENDED P.C.B LAYOUT (TOP VIEW)  
EFAULT YOLERANCE:±0.05

规格说明: Specifications:

电气特性: Electrical:

1. 额定电流: Current Rating  
1.5A/contact terminal
2. 额定电压: Voltage Rating  
30V DC
3. 接触阻抗: Contact Resistance  
30 milliohms MAX
4. 耐电压: Dielectric Withstanding Voltage:  
100 V AC AT Sea Level
5. 绝缘阻抗: Insulation Resistance:  
100MEGA ohms MIN

物理性能: Mechanical:

1. 插拔力: Connector Mate and Unmate Force  
Mate force: 3.57kgf (MAX)  
Unmate force: 1.02kgf (MIN)
2. 端子保持力: Terminal Retention  
0.5kgf (MIN)

原材料: Material:

1. 塑胶: Housing:  
High Temperature Plastic,  
LCP White/Black
2. 端子: Contact: Copper Alloy C2680/c5191
3. 外壳: Shell: Copper Alloy C2680/SUS

电镀: Plating:

1. 端子: Contact: Plated Gold in Mating Area;  
Matte Tin On Solder Tails
2. 外壳: Shell:  
Plated Matte tin, Salt spray test: 24 hours

## CMTDDZ 东莞市田都科技有限公司

### DONGGUAN TIANDU TECHNOLOGY CO.,LTD.

.X: ±0.20	.X*: ±1.5*	INTENDED USE: <b>CONNECTOR</b>	TITLE: 大牛角直边无定位柱铜壳连续镀	
.XX: ±0.10	.XX*: ±1.0*		PART NO.:	<b>SEE TABLE</b>
.XXX: ±0.05	.XXX*: ±0.5*	APPD.:	DWG. NO.:	<b>T10-05FB23</b>
MAT'L.:		CHKD.:	SCALE: 1:1	PAGE: 1/1
SEE NOTES		DR.:	UNIT: mm	REV.: A
FINISH:				