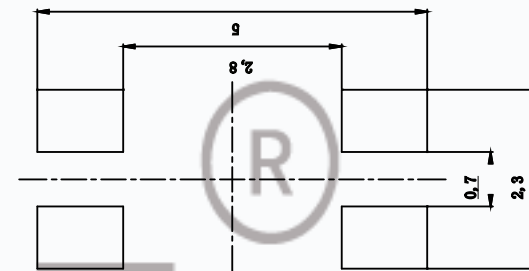
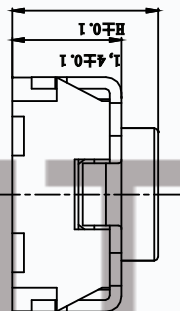
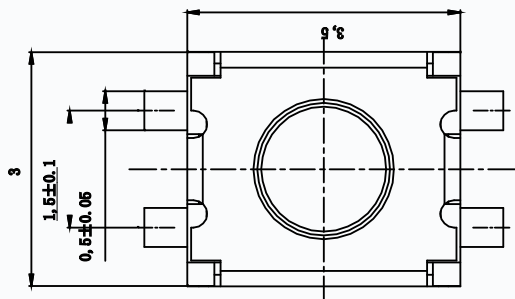
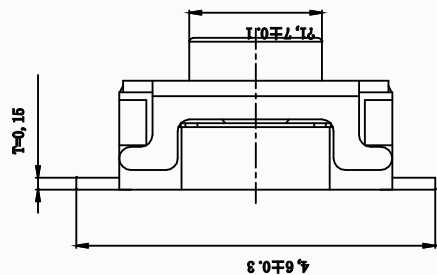
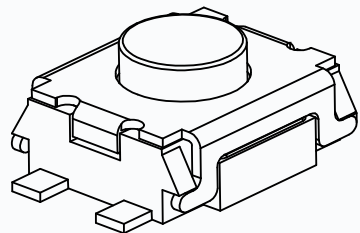
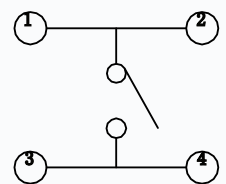
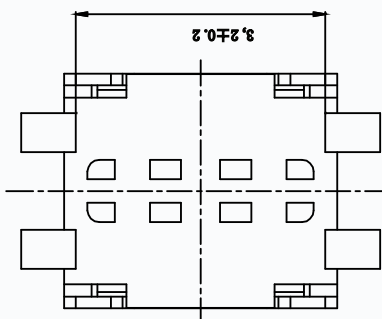




CAD FILE:

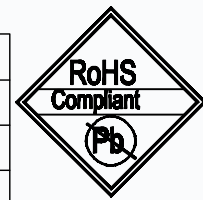


P.C.B. LAND PATTERN



CIRCUIT DIAGRAM

MODEL NO.	XX	H
T6-3040GS-XX-H	16=160gf	1.8MM
		1.87MM
	25=250gf	1.92MM
		2.0MM



CMTDDZ

SPECIFICATIONS

Rating	50mA 12V DC
Travel	0.15±0.1mm
Contact Resistance	≤ 100 mΩ
Operating temperature	-20℃ ~ 70℃(45% ~ 85% RH)
Operating Force	160±30gf/250±50gf
Operating Life	100,000 Cycles

NO.	PARTS	MATERIALS	Q'TY	FINISH
8				
7				
6	COVER	SUS	1	NATURAL
5	KEYSTROKE	NYLON	1	BLACK
4	DUST COVER	KAPTON FILM	1	YELLOW
3	TERMINAL	PHOSPHOR BRONZE	4	PLATING SILVER
2	CONTACT	F.Ag/SUS	2	NATURAL
1	BASE	NYLON	1	BLACK

TOLERANCE UNLESS SPECIFIED		THESE DRAWINGS AND SPECIFICATIONS ARE THE PROPERTY OF DONGGUAN TIANDU TECHNOLOGY CO.,LTD. AND SHALL NOT BE REPRODUCED, COPIED OR USED IN ANY MANNER WITHOUT THE PRIOR WRITTEN CONSENT OF DONGGUAN TIANDU TECHNOLOGY CO., LTD	DESCRIPTIONS OF REVISION		APPD.
WITHIN 1.5mm : ±0.1mm					
OVER 1.5mm : ±0.2mm					
TITLE : TACT SWITCH			UNIT : mm	DRWG NO.: CMTDDZ-T6-3040GS-00	
MODEL: T6-3040GS-XX-H			SCALE: 3:1	DWN.	ERIC 2013-6-17
CMTDDZ 东莞市田都科技有限公司					CHK'D MAIKO 2013-6-17
					APPD. Coco 2013-6-17
DONGGUAN TIANDU TECHNOLOGY CO.,LTD.					