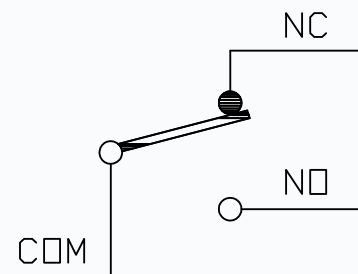
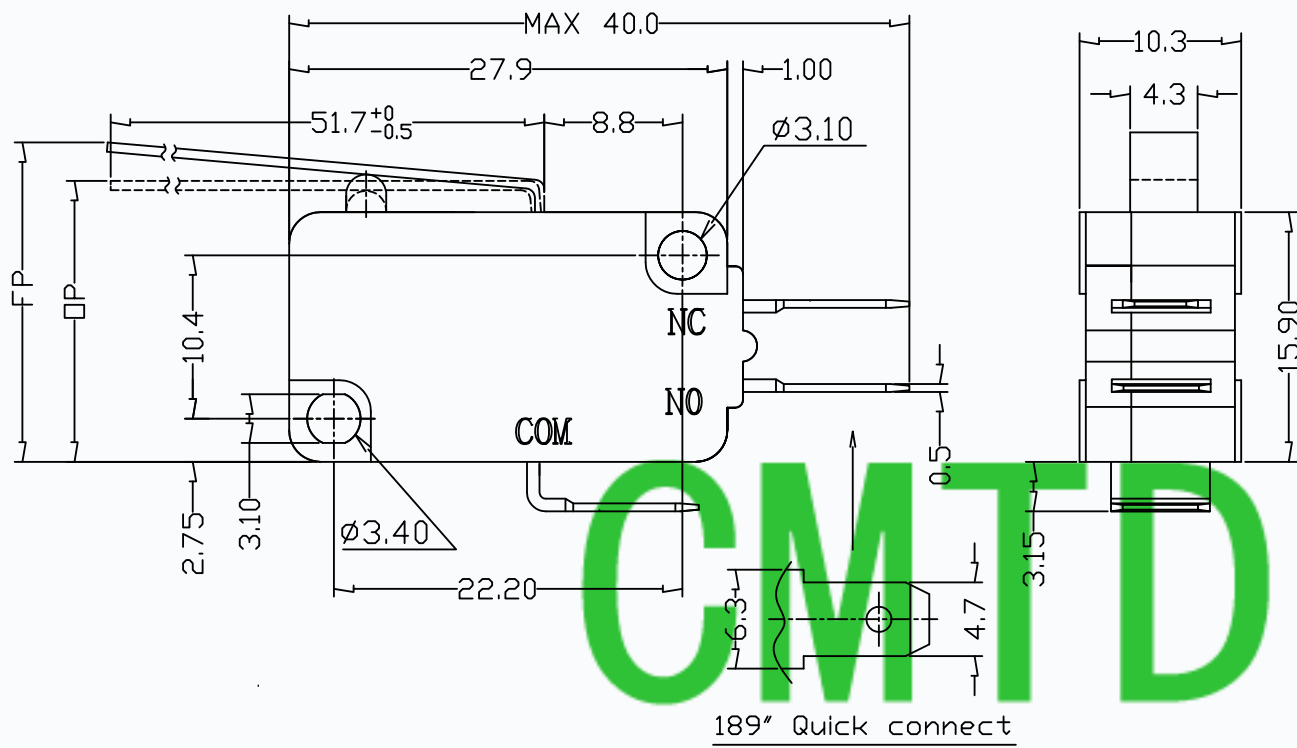


CAD FILE:

### DIMENSIONS



CIRCUIT DIAGRAM



# CMTDDZ

### MODEL CODE

**VM** **XX-00** **XX-X** **S-XX**  
 1 2 3 4 5 6 7

1. Series: VM

2. Current Rating: 06=6A 125/250VAC  
 10=10A 125/250VAC  
 15=15A 125/250VAC  
 20=20A 125/250VAC

3. Actuator: 00=Non-lever 01-99=Lever

4. Termination: see chart (N/K/J/L/W/A)  
 (7=SPST-NO/16=SPST-NC)

5. Operating Force: see chart

6. Spring Material: S=SUS304

7. Number

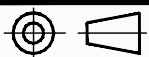
### 1.Functional spec

|                        |                       |
|------------------------|-----------------------|
| 1.1 Rated Voltage      | 125/250VAC            |
| 1.2 Rated Current      | 6A/10A/15A/20A        |
| 1.3 Contact Resistance | ≤100mΩ(Initial value) |
| 1.4 Operating Force    | 35±15gf/60±25gf       |
| 1.5 Free Position      | 22.6±2.0mm            |
| 1.6 Operating Position | 18.1±2.0mm            |

### 2.Reliable Rating

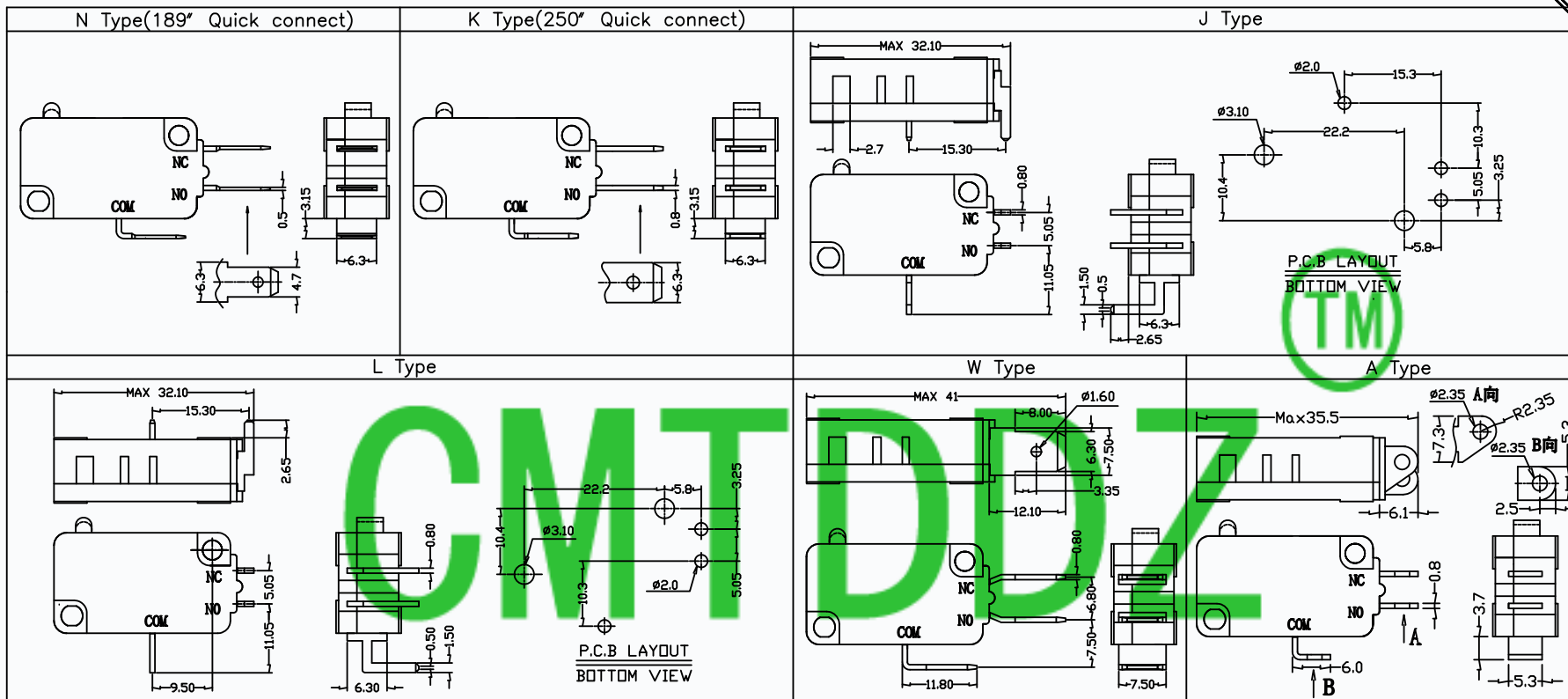
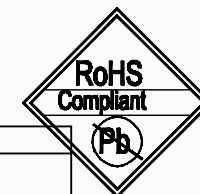
|                           |                                 |
|---------------------------|---------------------------------|
| 2.1 Mechanical Life       | 1,000,000CYCLES                 |
| 2.2 Electrical Life       | 10,000CYCLES                    |
| 2.3 Insulation Resistance | ≥100MΩ DC500V(Initial value)    |
| 2.4 Withstand Voltage     | AC1,500V 1minute(Initial value) |
| 2.5 Soldering Temper      | Hand Soldering                  |
| 2.6 Ambient Humidity Used | <85%RH                          |

|  |       |           |                              |                  |
|--|-------|-----------|------------------------------|------------------|
| TOLERANCE UNLESS SPECIFIED             |       |           |                              |                  |
| TOLERANCE : ±0.2mm                     | A     | 2014-8-29 | TIANDU ELECTRONICS           |                  |
|  | ISSUE | DATE      | DESCRIPTIONS OF REVISION     | APPD.            |
| TITLE : MICRO SWITCH                   |       | UNIT : mm | DRWG NO.:TDU-VMXX-00XX-XS-XX |                  |
| MODEL:SEE TABLE                        |       | SCALE:3:1 | DWN.                         | ERIC 2012-12-12  |
| CMTDDZ 东莞市田都电子有限公司                     |       |           | CHK'D                        | MAIKO 2012-12-12 |
| DONGGUANSHI TIANDU ELECTRONIC CO.,LTD. |       |           | APPD                         | Coco 2012-12-12  |

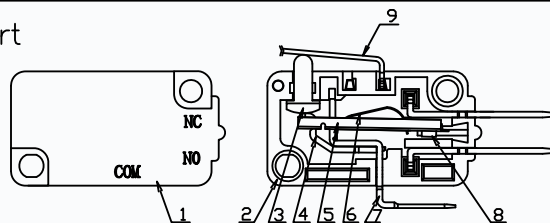


CAD FILE:

Terminal Type



Structure chart



Material list

| NO. | PARTS         | MATERIALS    | Q'TY | FINISH         | TOLERANCE UNLESS SPECIFIED             |  | TOLERANCE : ±0.2mm |  | TITLE : MICRO SWITCH     |  | UNIT : mm |  | DRWG NO.:TDU-VMXX-00XX-XS-XX |  |
|-----|---------------|--------------|------|----------------|--|--|--------------------|--|--------------------------|--|-----------|--|------------------------------|--|
| 8   | Contact       | Silver alloy | 3    | Silver Plating | A                                      |  | 2014-8-29          |  | TIANDU ELECTRONICS       |  | DWN.      |  | ERIC 2012-12-12              |  |
| 7   | Terminal      | C2680        | 3    | Silver Plating | ISSUE                                  |  | DATE               |  | DESCRIPTIONS OF REVISION |  | APPD.     |  | 2012-12-12                   |  |
| 6   | Spring Plate  | C5210        | 1    |                | MODEL:SEE TABLE                        |  | SCALE:3:1          |  | CMTDDZ 东莞市田都电子有限公司       |  | CHK'D     |  | MAIKO 2012-12-12             |  |
| 5   | Change Plate  | C2680        | 1    |                | DONGGUANSHI TIANDU ELECTRONIC CO.,LTD. |  |                    |  | APPD                     |  | Coco      |  | 2012-12-12                   |  |
| 4   | Fixed Rod     | C2680        | 1    |                |  |  |                    |  |                          |  |           |  |                              |  |
| 3   | Button        | PBT          | 1    | Black          |  |  |                    |  |                          |  |           |  |                              |  |
| 2   | Lower Housing | PBT          | 1    | Black          |  |  |                    |  |                          |  |           |  |                              |  |
| 1   | Upper Housing | PBT          | 1    | Black          |  |  |                    |  |                          |  |           |  |                              |  |