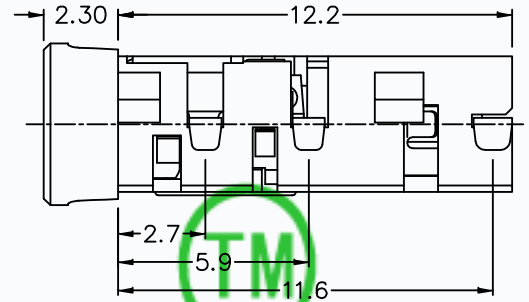
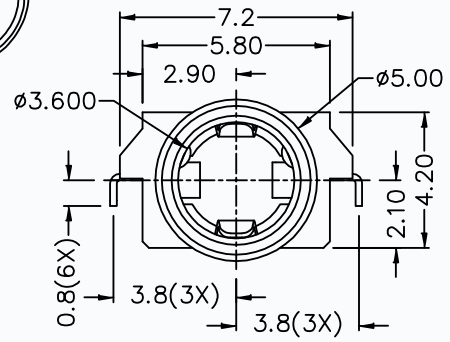
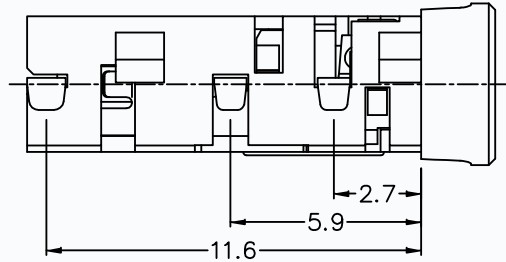
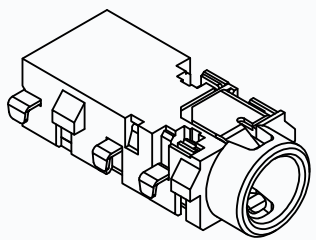
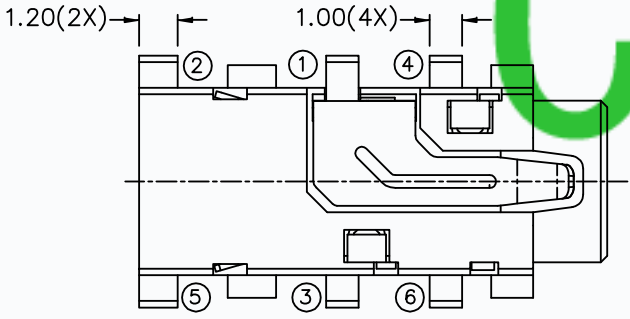


CAD FILE:

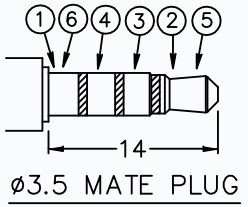
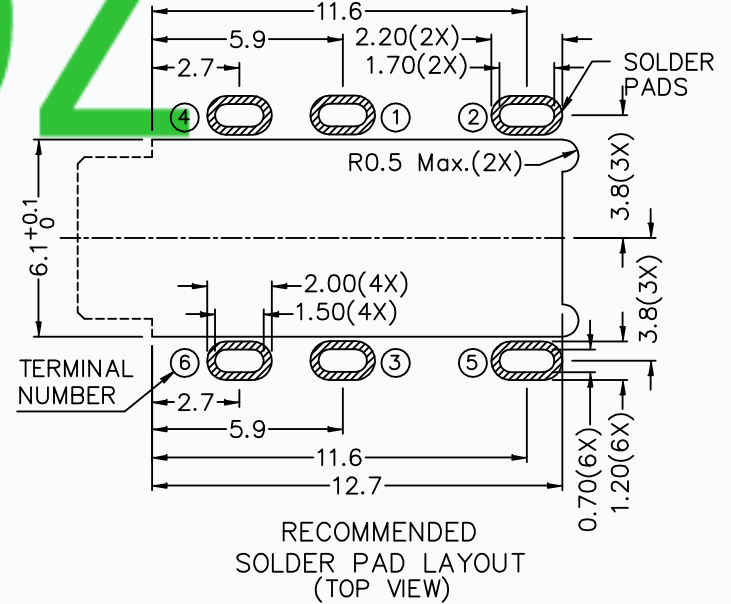


CMTDDZ



*** MATERIAL**

- TERMINAL 1 : COPPER ALLOY
- TERMINAL 2 : COPPER ALLOY
- TERMINAL 3 : COPPER ALLOY
- TERMINAL 4 : COPPER ALLOY
- TERMINAL 5 : COPPER ALLOY
- TERMINAL 6 : COPPER ALLOY
- HOUSING : PA6T



MODEL NO.	T13-3535D
SCHEMATIC	

APPD.	DESCRIPTIONS OF REVISION	<p>TOLERANCE UNLESS SPECIFIED</p> <p>WITHIN 1.5mm : ±0.1mm OVER 1.5mm : ±0.2mm</p>	<p>THESE DRAWINGS AND SPECIFICATIONS ARE THE PROPERTY OF DONGGUAN TIANDU ELECTRONICS CO.,LTD. AND SHALL NOT BE REPRODUCED. COPIED OR USED IN ANY MANNER WITHOUT THE PRIOR WRITTEN CONSENT OF DONGGUAN TIANDU ELECTRONICS CO., LTD.</p>	TITLE : 3.5mm PHONE JACK		UNIT : mm	DRWG NO.: CMTDDZ-T13-3535-00		
				MODEL: T13-3535D		SCALE: 3:1	DWN.	ERIC	2013-6-17
				<p>CMTDDZ 东莞市田都电子有限公司 DONGGUAN TIANDU ELECTRONICS CO.,LTD.</p>		CHK'D	MAIKO	2013-6-17	
APPD.	Coco	2013-6-17							