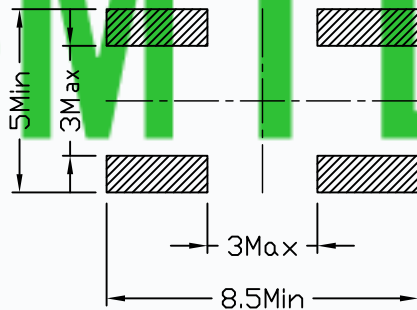
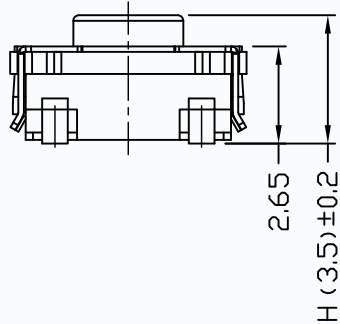
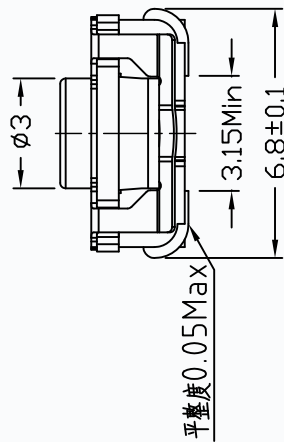
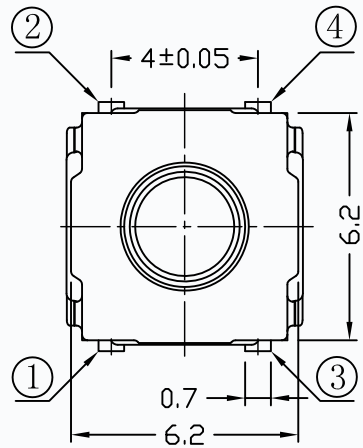
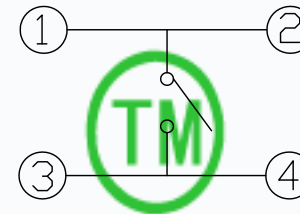
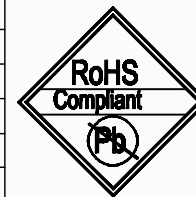


CAD FILE:



P.C.B LAND DIMENSION

MODEL NO.	XX	H(MM)
T6-6262BS-XX-H	16=160GF	3.5
	20=200GF	4.7
	30=300GF	5.2



CIRCUIT DIAGRAM

CMTDDZ

SPECIFICATIONS

Rating	50mA 12V DC
Travel	0.5±0.3mm
Contact Resistance	≤ 100 mΩ
Operating temperature	-30℃ ~ 85℃ (45% ~ 85% RH)
Operating Force	150±50/250±50gf
Operating Life	500,000 Cycles
Ip Rating	IP67

NO.	PARTS	MATERIALS	Q'TY	FINISH	TOLERANCE UNLESS SPECIFIED	DESCRIPTIONS OF REVISION	APPD.
8					WITHIN 1.5mm : ±0.1mm OVER 1.5mm : ±0.2mm	THESE DRAWINGS AND SPECIFICATIONS ARE THE PROPERTY OF DONGGUAN TIANDU ELECTRONICS CO.,LTD. AND SHALL NOT BE REPRODUCED, COPIED OR USED IN ANY MANNER WITHOUT THE PRIOR WRITTEN CONSENT OF DONGGUAN TIANDU ELECTRONICS CO., LTD	
7							
6							
5	KNOB	SILICONE	1	WHITE			
4	COVER	SUS	1				
3	TERMINAL	H65	4	Ag plating			
2	CONTACT	SUS	1	Ag plating			
1	BASE	PA6T	1	-----			
					TITLE : WATERPROOF SWITCH	UNIT : mm	DRWG NO.: CMTDDZ-T6-6262BS-00
					MODEL: T6-6262BS-XX-H	SCALE: 3:1	DWN. ERIC 2013-6-17
					CMTDDZ 东莞市田都电子有限公司	CHK'D MAIKO 2013-6-17	
					DONGGUAN TIANDU ELECTRONICS CO.,LTD.	APPD. Coco 2013-6-17	