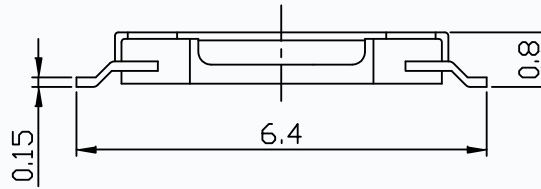
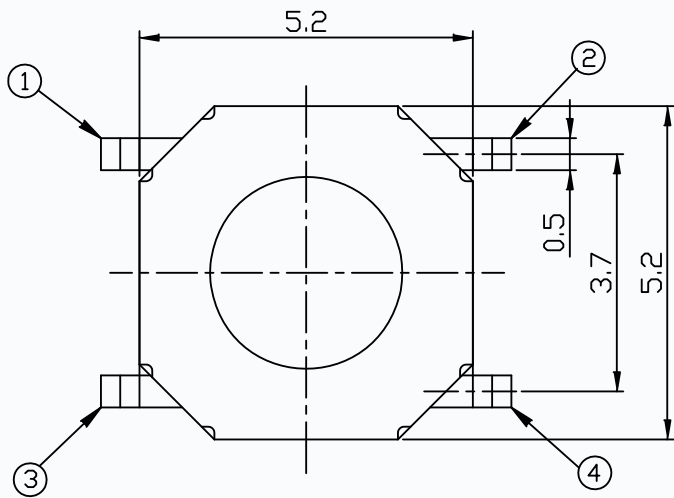
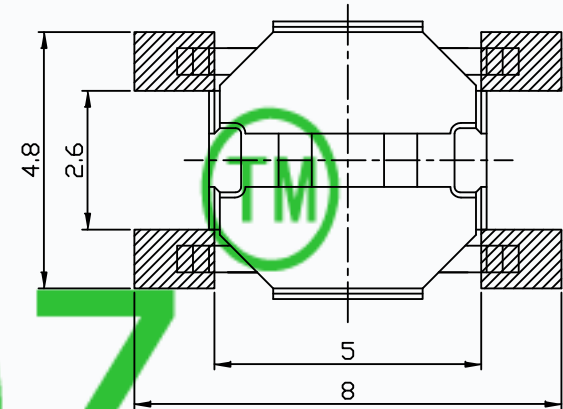
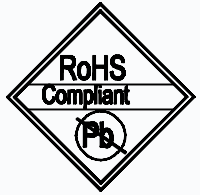


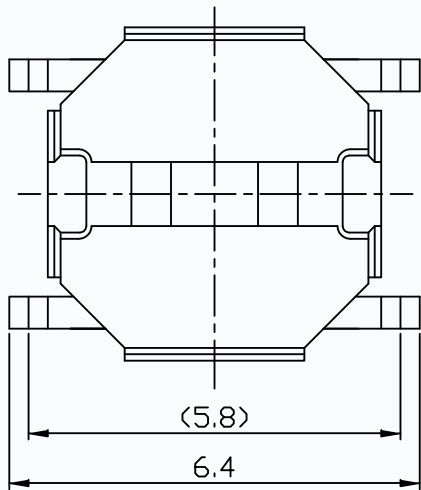
CAD FILE:



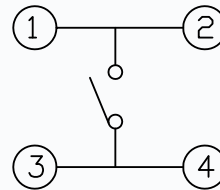
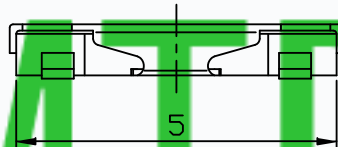
MODEL NO.	XX
T6-5252S-XX	07=70GF
	10=100GF
	16=160GF
	26=260GF



P.C.B. LAND PATTERN



**CMTDDZ**



CIRCUIT DIAGRAM

**SPECIFICATIONS**

Rating	50mA 12V DC
Travel	0.25±0.1mm
Contact Resistance	≤ 100 mΩ
Operating temperature	-20℃ ~ 70℃( 45% ~ 85% RH )
Operating Force	70±50/100±50/160±50/260±60gf
Operating Life	100,000 Cycles

NO.	PARTS	MATERIALS	Q'TY	FINISH
8				
7				
6				
5	COVER	SUS	1	NATURAL
4	DUST COVER	KAPTON FILM	1	YELLOW
3	TERMINAL	PHOSPHOR BRONZE	4	PLATING SILVER
2	CONTACT	F.Ag/SUS	1	NATURAL
1	BASE	NYLON	1	BLACK

TOLERANCE UNLESS SPECIFIED		THESE DRAWINGS AND SPECIFICATIONS ARE THE PROPERTY OF DONGGUAN TIANDU ELECTRONICS CO.,LTD. AND SHALL NOT BE REPRODUCED, COPIED OR USED IN ANY MANNER WITHOUT THE PRIOR WRITTEN CONSENT OF DONGGUAN TIANDU ELECTRONICS CO., LTD		DESCRIPTIONS OF REVISION		APPD.		
WITHIN 1.5mm : ±0.1mm OVER 1.5mm : ±0.2mm				TITLE : TACT SWITCH		UNIT : mm	DRWG NO.: CMTDDZ-T6-5252S-00	
				MODEL: T6-5252S-XX		SCALE: 3:1	DWN.	ERIC
		CMTDDZ 东莞市田都电子有限公司		CHK'D		MAIKO	2013-6-17	
		DONGGUAN TIANDU ELECTRONICS CO.,LTD.		APPD.		Coco	2013-6-17	